

UPGRADING REMOTE IO 1810



1 INTRODUCTION

This procedure will describe the necessary steps to upgrade a Remote IO 1810 to the new generation firmware, going from version 23 to version 100 or later, via a converter firmware.

Note: It is not easily doable to go back from version 100 to version 23.

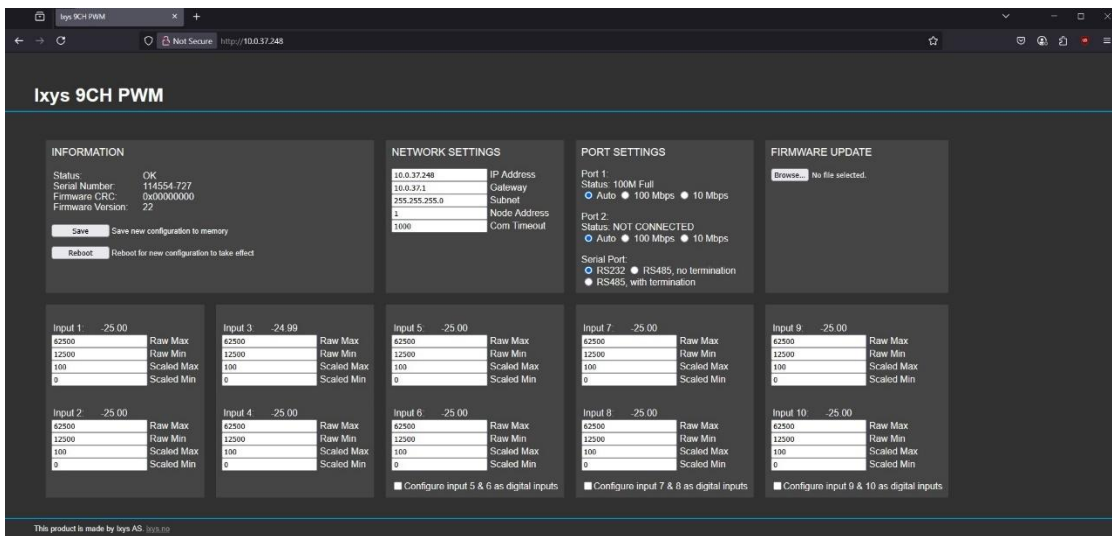
2 UPGRADE STEPS

2.1 UPLOAD CONVERTER FIRMWARE

The board first needs to be upgraded to a converter firmware that will allow upgrading to a final version.

Follow these steps to install the converter firmware:

1. Download the converter firmware binary, and save the file:
https://icsys.blob.core.windows.net/icsys-firmware/pwm_9ch_eth_serial/mcu/v99/iCsysPWM_update.bin
2. Power up the PCB. Refer to the datasheet for wiring.
3. Open the web interface of the PCB by entering the PCBs IP address in a browser:



2.2 UPLOAD FINAL FIRMWARE

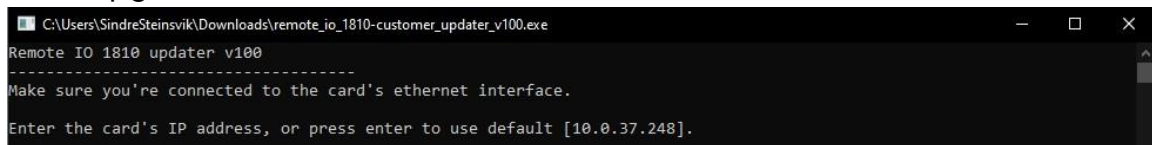
Once the converter firmware upgrade has been completed, you can run a customer updater to complete the finalize the process.

1. Download the customer updater zip-file from https://icsys.blob.core.windows.net/icsys-firmware/remote_io_1810/v100/updaters/remote_io_1810-customer_updater_exe_v100.zip

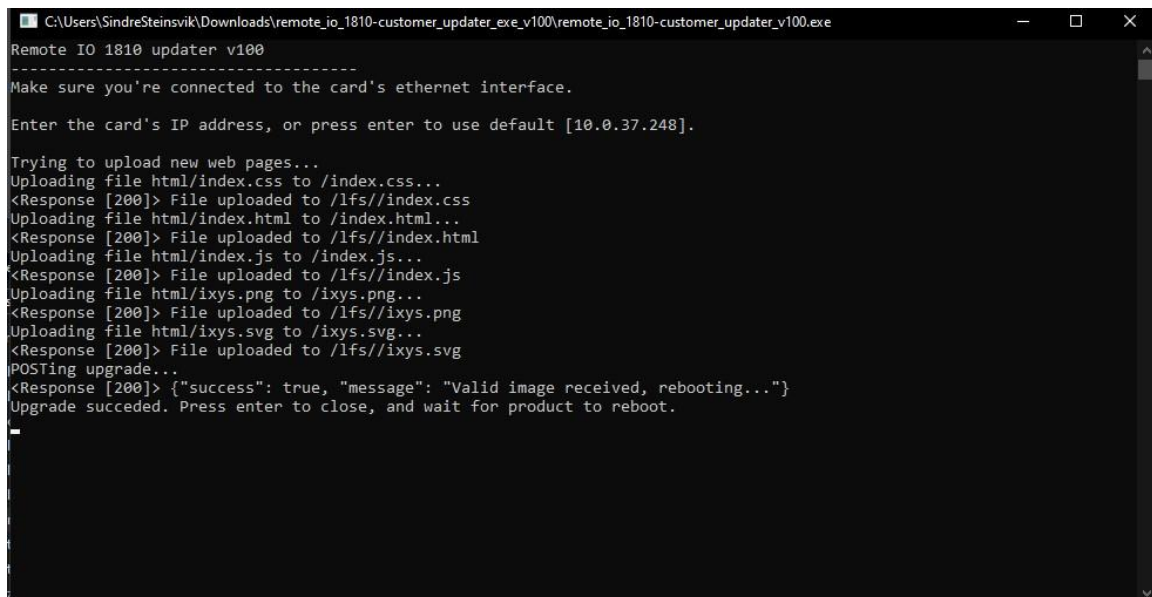
Note: If there is a later version than v100 available on the Ixys website, it's recommended to use the later version.

<https://ixys.no/firmware-release-notes/>

2. Extract the downloaded zip file and run the .exe-file within.
3. Press Enter to upgrade the default IP address, or write the IP address of the PCB to be upgraded.



4. Wait until Upgrade succeeded is printed, and then press Enter to close the window.



Note: Should the upgrade process fail in any way, it's safe to try again at this stage.

5. The PCB should now run the correct firmware, with a complete web interface available when accessing its IP address in a browser:

