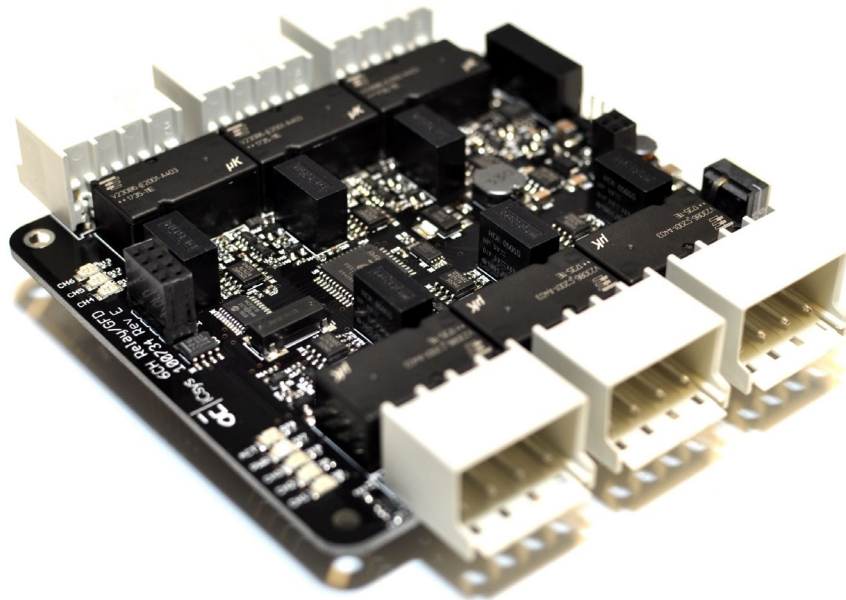


SPECIFICATIONS

PCB CS 6CH RELAY/GFD



Description

The Relay/GFD board is an expansion board for the control system range. It runs stacked with a master PCB.

The benefit of isolation monitoring on all relays is the ability to detect, switch off and isolate the troubled circuit while other circuits are active.

The PC/104 stacking feature allows for swift mounting and keeps wiring to a minimum.

Complete range of stackable expansion boards for various applications available.

Features

- 6 two-pole relays for complete isolation
- Current measurement on all channels
- Ground fault detection on all channels
- Isolation resistance measurement on all channels
- Auto fuse on all channels
- Ixys Control System slave
- Stackable with other CS PCBs
- LED indicators for on/off indication on all channels
- PC/104 dimensions

SPECIFICATIONS

PCB CS 6CH RELAY/GFD

General Technical Specifications

Type		PCB CS 6CH Relay/GFD
Dimensions	mm	96x90x16.4
Weight	g	~144
Temperature Operational (ambient)	°C	-18 to +70
Temperature Storage	°C	-20 to +70

Electrical

Supply Voltage	V DC	24 (12-30)
Power Consumption (all relays off)	W	~2
Power Consumption (all relays on)	W	~4 (up to 8 W for 2 s)
Current Measurement Accuracy	mA	±300

Communication

CAN bus	kbps	250
---------	------	-----

Performance

Relay Operating Voltage	V DC/V AC	0-48/0-250
Relay Operating Current	A	10 @ 250 V AC
Relay Operating Current	A	10 @ 24 V DC
Relay Operating Current	A	3 @ 48 V DC
Relay Mechanical Life	Cycles	> 10000*

Ordering Part Numbers

Description	Part Number
PCB CS 6CH Relay/GFD	100734

Accessories

Connector 4-way	112075
Spacer M3 16 mm w/stud steel	104764

*For operations with longer mechanical life requirements, please contact Ixys.

SPECIFICATIONS

PCB CS 6CH RELAY/GFD

TYPICAL RELAY FUNCTION

